

Time Out London

Around Town Critics' choice

Emi Ijo – Heart of Dance

See Sat
Waterborne entertainment on three sites along the Thames.

Fleeting Opera

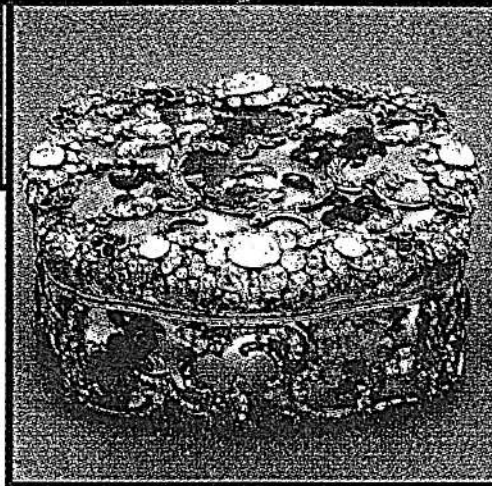
See Wed 26
The Royal Opera and the Royal Ballet take to the water for a performance on barges moored on the Thames at Battersea Park.

Gilbert Collection

See Tourist attractions
New museum of decorative arts (pictured) currently drawing the crowds at Somerset House.

High Street Londinium

See Major museums
New exhibition about Roman London opening at the museum of London on Fri.



Thomas the Tank Engine

See Specialist Museums
Exhibition of Thomas memorabilia and associated activities for children at the London Transport Museum.

Veles e Vents (Sails and Wind)

See Sat
Xarxa Teatre's dramatic firework spectacular, part of the Croydon Summer Festival.

Tourist Attractions

British Airways London Eye

0870 5000600

South Bank, SE1. ⊕ Waterloo. Daily 9am-10pm (last adm 9.30pm; booking office 8.30am-9.30pm). £8.50, seniors £6.50, children £5 (booking fee 50p per person).

Advance booking by phone is still frustrating, despite the introduction of extra lines, but the new policy is to hold back a number of tickets for same-day sale on site, so it may be worth turning up and taking pot luck (at present you are more likely to be successful during the week than at weekends). To book a slot less than five days ahead you must go along in person. If you want to book a whole capsule ring 020 7654 0813. It's worth taking binoculars or hiring them at the ticket office in County Hall (£2.50; you'll need a credit card for the deposit).

The Couper Collection 020 8871 7572

Riverside Walk, Hester Rd, SW11. ⊕ Sloane Square then bus 19 49 239 319 345 over Battersea Bridge. Thur 4-7pm, Fri 3-6pm. £3, concs £1.50, inc guided tour.

Permanent floating art museum located on several converted Thames barges features 20 years of artwork by the Thames-based contemporary artist and mariner Max Couper. (London String of Pearls Millennium Festival opening.) ▶ Sept 22

☐ **The Fleeting Opera** The Royal Opera and the Royal Ballet perform on the barges, viewable from Battersea Park. See Wed 26.

The Dome 0870 606 2000

Greenwich. ⊕ North Greenwich. Mon-Sun 9am-8pm. £20, under-15s £16.50, under-5s free, OAPs £18, students £16, family ticket (2 adults, 2 children/1 adult, 3 children/1 adult, 4 children/2 adults, 3 children) £57. Adm after 4pm £10. Tickets on sale for the period until Aug 31. If you book on the number above you have to pay a £2.50 booking fee per transaction; book on the internet (www.dome2000.co.uk) and the fee is £1. If you book in person at a Lottery outlet there's no handling charge. You can also buy tickets on the gate, subject to availability.

Arrive at opening time and stay a whole day; you still won't have time to visit all the zones, see the show and the film and explore outside. Remember to pick up an 'Art at the Dome' guide to the 19 works of art inside the Dome and in the grounds and don't miss the exhibition showing how the Dome came to be built where it is. Other highlights include the sculptures, the 'Work and Learning' zone (profound, provocative,